

CLUTCH

ARROW MANUFACTURED REPLACEMENT PARTS

CLUTCH-RP-C OCT15



**A Tradition of Excellence
Since 1955**



Arrow Engine Company was founded in 1955 as Arrow Specialty Company by Jeff Davis in Tulsa, Oklahoma, beginning a tradition of providing premium service and exceptional products to the oil & gas industry, as well as other industrial markets throughout the world. Arrow is a market-leading provider of natural gas powered engines and parts, as well as gas compressors, gas production equipment, meter runs, engine electronics and chemical pumps. Today, Arrow continues its tradition of focusing on producing the most reliable equipment, parts and extraordinary customer service in the industry.



Arrow is a part of IES Infrastructure, which operates as one of four divisions under IES Holdings, Inc. comprised of over 8,000 employees nationwide. IES Infrastructure provides electrical and mechanical apparatus services, custom steel fabrication, and custom power solutions including generator enclosures and bus systems to customers both in the United States and abroad.



CONTENTS



CLUTCH SPECS

engine reference	4
clutch reference	9
pto assembly drawing	10
pto specifications	10
housing specifications	11
installation details	11
allowable side-pull loads for power take-offs	12
complete power take-off's	13
drive ring details	14
drive plate specifications	15

PARTS LIST

C-107	18
C-108	20
C-110	22
SP-111	24
SP-114	26
SP-211	28
SP-214	30
SPE-314	32
C-Series repair kits	34

ENGINE REFERENCE BY ENGINE TYPE

Engine Model	Hp/rpm Rating	Pec®	Td®	Rockford®	Arrow
ARROW					
C-46	10 @ 800	C01-07-5	C-107-SP5 (32526)		C-107-SP-5
C-66	14 @ 700	C01-10-4S	C-110-HP4 (32524)		C-110-HP-4
		CN1-07-4A	C-107-HP4 (15291)		C-107-HP-4
C-96	20 @ 600	C01-10-3S	C-110-HP3		C-110-HP-3
C-106	32 @ 800	C01-11-3S	SP-111-HP3 (36183)		SP-111-HP-3
C-255	55 @ 750	C01-14-0	SP-114-P0 (36705)		SP-114-P0
L-95	65 @ 600	CN1-14-1	SPE-114-P1 (35508)		SPE-114-P1
L-1770	125 @ 475	CN2-14-0Z	SPE-214-P0 (35235)		SPE-214-P0
L-2165	155 @ 475	CN3-14-0SZ	SPE-314-P0 (35906)		SPE-314-P0
AJAX®					
EA-15	15 @ 900	C01-08-4A	CE-108-HP4 (28093)		
EA-22	22 @ 650	CN2-11-2AZ	SPE-211-HP2 (35473)		
EA-30	30 @ 650	CN2-11-2AZ	SPE-211-HP2 (35473)		
E0-30	19 @ 525	CN1-14-1	SPE-114-P1 (35484)		
E-42	27 @ 525	CN1-14-1	SPE-114-P1 (35484)		
DP-60	60 @ 475	CN2-14-0Z	SPE-214-P0 (35717)		
DP-70	70 @ 400	C02-14-0A	SP-214-P0 (35717)		
DP-80-A	80 @ 400	CN3-14-0Z	SPE-314-P0 (35464)		
ALLIS CHAMBERS®					
D-262	58 @ 2000	C01-10-3ASZ	C-110-HP3 (31618)		C-110-HP-3
433-T	67 @ 2000	C01-10-3ASZ	C-110-HP3 (31618)		C-110-HP-3
433-I	74 @ 2200	C01-10-3ASZ	C-110-HP3 (31618)		C-110-HP-3
		HEAVY DUTY	SP-111-HP3 (36536)		SP-111-HP-3
649	80 @ 2400	C01-11-SBSZ	SP-111-HP3 (36536)		SP-111-HP-3
320	53 @ 2600	C01-10-4B	C-110-HP4		C-110-HP-4
426	72 @ 3600	C01-10-4B	C-110-HP4		C-110-HP-4

Engine Model	Hp/rpm Rating	Pec®	Td®	Rockford®	Arrow
---------------------	----------------------	-------------	------------	------------------	--------------

CAT®

3304-NA	85 @ 2000 HEAVY DUTY	C01-11-2A C01-14-1AZ	SP-111-HP2 (35110) SP-114-P1 (37068)	4-11122	
3304-t	125 @ 2000 HEAVY DUTY	C01-11-2A C01-14-1AZ	SP-111-HP2 (35110) SP-114-P1 (37068)		4-11088
3208-NA	150 @ 2400 HEAVY DUTY	C01-11-2A C03-14-1A	SP-111-HP2 (35110) SP-314-P1		
3306-NA	125 @ 2000 HEAVY DUTY	C01-14-1A C02-14-1AZ	SP-114-P1 (37068) SP-214-P1 (37292)		
3306-T	170 @ 2000 HEAVY DUTY	C01-14-1A C03-14-1A	SP-114-P1 (37068) SP-314-P1		4-14622
3306-TA	215 @ 2000 HEAVY DUTY	C02-14-1AZ C03-14-1B	SP-214-P1 (37292) SP-314-P1 (37293)		opt. 14X-217 pilot
3406-T	250 @ 1800 HEAVY DUTY	C02-14-1AZ C03-14-1B	SP-214-P1 (37292) SP-314-P1 (37294)		4-11060 4-14622
3406-TA	275 @ 1800	C02-14-1B	SP-214-P1 (37293)		
3408-t	300 @ 1800 MEDIUM DUTY	C02-14-1A C03-14-1B	SP-214-P1 (37292) SP-314-P1		
3408-TA	365 @ 1800 LIGHT DUTY	C03-14-1B	SP-314-P1		
3412-T	400 @ 1800 LIGHT DUTY	C03-14-1B	SP-314-P1		

CHRYSLER®

H-255	69 @ 3200	C01-10-(3,4)A	C-110-HP(3,4)		C-110-HP-4
HB-225	69 @ 3200	C01-10-(3,4)A	C-110-HP(3,4)		C-110-HP-4
LH-318	98 @ 3200	C01-11-(3,4)A	SP-111-HP(3,4)		SP-111-HP-3
LT-318	98 @ 3200	C01-11-(3,4)A	SP-111-HP(3,4)		SP-111-HP-3

CHRYSLER/NISSAN®

CN4-33	50 @ 2800	CN1-07-5A	C-110-HP(3,4)		C-110-HP-3
		C01-07-5A	C-107-SP5		C-107-SP-5
CN6-33	73 @ 2800	C01-10-4A	C-110-HP4		C-110-HP-4

ENGINE REFERENCE BY ENGINE TYPE

Engine Model	Hp/rpm Rating	Pec®	Td®	Rockford®	Arrow
CUMMINS®					
3B 2.9	48 @ 2200	C01-11-3A	SP-111-HP3	4-11183	SP-111-HP-3
4B 3.9 C	76 @ 2500	C01-11-3A	SP-111-HP3	4-21681	SP-111-HP-3
4BT 3.9 C	100 @ 2500	C01-11-3A	SP-111-HP3	4-11183	SP-111-HP-3
6B 5.9 C	115 @ 2500	C01-11-3A	SP-111-HP3	4-11183	SP-111-HP-3
DETROIT®					
HB-2253.53	64 @ 2200	C011-10-4SZ	C-110-HP4		C-110-HP-4
4-53	87 @ 2200 #3	C01-11-3AS	SP-111-HP3 (36693)		SP-111-HP-3
FORD®					
X-220	48 @ 2250	C01-10-4A	C-110-HP4	4-11256	C-110-HP-4
F-223	86 @ 2800	C01-10-4A	C-110-HP4	4-11256	C-110-HP-4
Y-330	77 @ 250	C01-10-4A	C-110-HP4	4-11256	C-110-HP-4
J-272	106 @ 2800	C01-10-4A	C-110-HP4	4-11256	C-110-HP-4
K-292	113 @ 2800	C01-10-4A	C-110-HP4	4-11256	C-110-HP-4
L-332	134 @ 2800	C01-10-3A	C-110-HP3		C-110-HP-3
FORD® DIESEL					
SSD-437	64 @ 2500	C01-10-3A	C-110-HP3		C-110-HP-3
DSD 442	59 @ 2500	C01-10-3A	C-110-HP3		C-110-HP-3
BSD 442	64 @ 2200	C01-10-3A	C-110-HP3		C-110-HP-3
FORD® GASOLINE					
CSG 417	38 @ 2800	C01-07-5A	C-107-SP5		C-107-SP-5
LSG 633	74 @ 2800	C01-10-4A	C-110-HP4		C-110-HP-4
LSG 641	85 @ 2800	C01-10-3A	C-110-HP3		C-110-HP-3
HATZ®					
D-108	60 @ 3000	C01-08-4A	C-110-HP4 (15333)		C-110-HP-4
V-95	62 @ 3000	C01-08-4A	C-110-HP4 (15333)		C-110-HP-4
V-108	80 @ 3000	C01-10-4A	C-110-HP4 (15333)		C-110-HP-4

Engine Model	Hp/rpm Rating	Pec®	Td®	Rockford®	Arrow
HERCULES®					
D-2000	51 @ 2400	C01-10-3SZ	C-110-HP3 (33172)		C-110-HP-3
D-2300	54 @ 2400	C01-10-3SZ	C-110-HP3 (33172)		C-110-HP-3
D-2300T	71 @ 2400	C01-10-4SZ	C-110-HP3 (33172)		C-110-HP-3
D-3000	75 @ 2400	C01-10-ASZ	C-110-HP3 (29490)		C-110-HP-3
D-3000T	93 @ 2400	C01-11-3AS	SP-111-HP3 (36693)		SP-111-HP-3
D-3400	82 @ 2400	C01-11-3AS	SP-111-HP3 (36693)		SP-111-HP-3
D-3400t	106 @ 2400	C01-11-3BS	SP-111-HP3 (34477)		SP-111-HP-3
INTERNATIONAL®					
U-220	HEAVY DUTY	C01-10-3A	C-110-HP3		C-110-HP-3
U-264-6	78 @ 2400	C01-10-3A	C-110-HP3		C-110-HP-3
U-308	87 @ 2400	C01-10-3A	C-110-HP3		C-110-HP-3
	HEAVY DUTY	C01-11-3A	SP-111-HP3		SP-111-HP-3
C-304	91 @ 3200	C01-11-3A	SP-111-HP3 (35750)		SP-111-HP-3
D-239	61 @ 2400	C01-11-3A	SP-111-HP3 (35750)		SP-111-HP-3
DT-239	70 @ 2200	C01-11-3A	SP-111-HP3 (35750)		SP-111-HP-3
D-358	92 @ 2400	C01-11-3A	SP-111-HP3 (35750)		SP-111-HP-3
ISUZU®					
3AB1	36 @ 2800	CN1-10-4A	C-110-HP4		C-110-HP-4
C240	49 @ 3000	C01-10-4A	C-110-HP4		C-110-HP-4
4JB1	61 @ 3000	C01-10-4A	C-110-HP4		C-110-HP-4
4BD1	78 @ 2800	C01-10-3A	C-110-HP3		C-110-HP-3
JOHN DEERE®					
3164-D	44 @ 2200	C01-10-4A	C-110-HP4		C-110-HP-4
4219-D	56 @ 2200	C01-10-4A	C-110-HP4		C-110-HP-4
4239-D	63@2200	C01-10-4A	C-110-HP4		C-110-HP-4
4239-T	72 @ 2200	C01-10-4A	C-110-HP4		C-110-HP-4
4276-D	66 @ 2200	C01-10-4A	C-110-HP4		C-110-HP-4
4276-T	81 @ 2200	C01-10-4A	C-110-HP4		C-110-HP-4
6329-D	83 @ 2200	C01-10-4A	C-110-HP4		C-110-HP-4
6359-D	95 @ 2200	C01-11-3A	SP-111-HP3		SP-111-HP-3
6359-T	110 @ 2200	C01-11-3A	SP-111-HP3		SP-111-HP-3
6414-D	103 @ 2200	C01-11-3A	SP-111-HP3		SP-111-HP-3
6414-T	120 @ 2200	C01-11-3A	SP-111-HP3		SP-111-HP-3
6466-D	117 @ 2200	C02-11-3A	SP-111-HP3		SP-111-HP-3
6466-T	133 @ 2200	C02-11-3A	SP-111-HP3		SP-111-HP-3
6466-A	190 @ 2200	C02-11-3A	SP-111-HP3		SP-111-HP-3

ENGINE REFERENCE BY ENGINE TYPE

Engine Model	Hp/rpm Rating	Pec®	Td®	Rockford®	Arrow
MURPHY® WATER COOLED MODELS					
D-226-4	68 @ 2800	C01-10-3A	C-110-HP3 (33393)		C-110-HP-3
D-226-6	102 @ 2800	C01-11-3A	SP-111-HP3 (35750)		SP-111-HP-3
PERKINS®					
AU-6804/203	58 @ 2400	C01-10-3A	C-110-HP3 (32117)		C-110-HP-3
4 / 236	78 @ 2500	C01-11-3A	SP-111-HP3 (35596)	4-11183	SP-111-HP-3
6 / 354	112 @ 2500	C01-11-3B	SP-111-HP3 (35530)		SP-111-HP-3
TELEDYNE/CONTINENTAL®					
F-227	76 @ 2800	C01-10-4A	C-110-HP4 (29227)		C-110-HP-4
	HEAVY DUTY	C01-10-3B	C-110-HP3 (33066)		C-110-HP-3
F-245	77.5 @ 2800	C01-10-4A	C-110-HP4 (29227)		C-110-HP-4
	HEAVY DUTY	C01-10-3B	C-110-HP3 (33066)		C-110-HP-3
WAUKESHA®					
VRG-220	68 @ 2600	C01-11-3A	SP-111-HP3 (36620)		SP-111-HP-3
VRD-200	58 @ 2600	C01-11-3A	SP-111-HP3 (36620)		SP-111-HP-3
VRDS-220	77 @ 2600	C01-11-3A	SP-111-HP3 (36709)		SP-111-HP-3
VRG-232	53 @ 2200	C01-10-3SZ	C-110-HP3 (36717)		C-110-HP-3
VRG-265	72 @ 2000	C01-10-3BS	C-110-HP3 (32197)		C-110-HP-3
VRG-283	83 @ 2000	C01-10-3BS	C-110-HP3 (32197)		C-110-HP-3
VRD-283	61 @ 2000	C01-10-3SZ	C-110-HP3 (36717)		C-110-HP-3
VRG-310	91 @ 2000	C01-10-3BS	C-110-HP3 (32197)		C-110-HP-3
VRD-310	79 @ 2000	C01-10-3BS	C-110-HP3 (32197)		C-110-HP-3
VRD-310S	101 @ 2000	C01-11-3BS	SP-111-HP3 (35103)		SP-111-HP-3
WHITE/HERCULES®					
G-2300	61 @ 2200	C01-10-3ASZ	C-110-HP3 (29490)		C-110-HP-3
G-3000	88 @ 2400	C01-10-3ASZ	C-110-HP3 (29490)		C-110-HP-3
G-3400	98 @ 2400	C01-11-3AS	SP-111-HP3 (36693)		SP-111-HP-3
WITTE®					
E-20	20 @ 750	C01-10-4ASZ	C-110-HP4 (30762)		C-110-HP-4

ENGINE REFERENCE BY CLUTCH TYPE

*

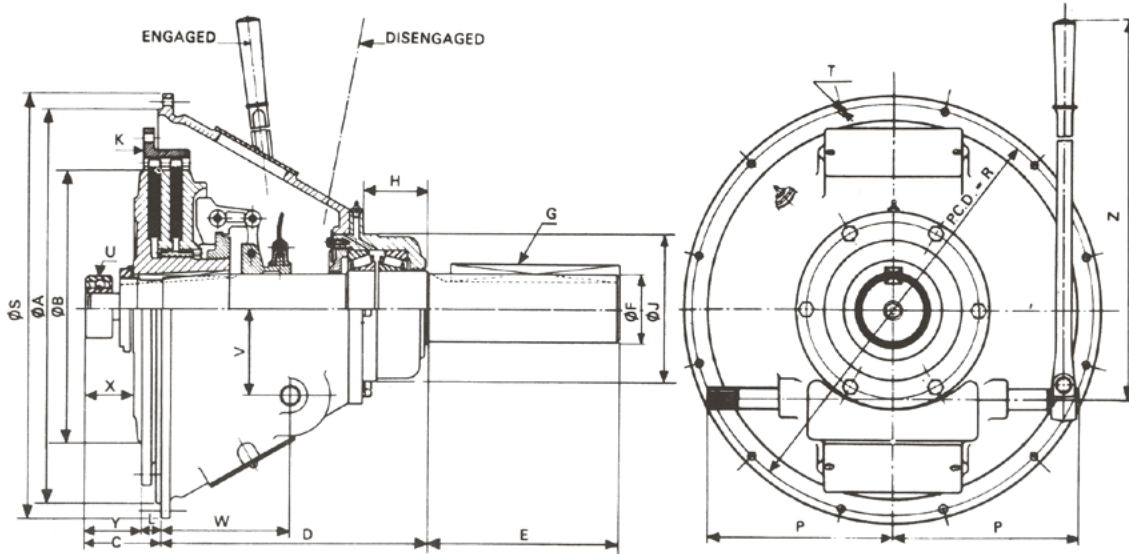
C-107	C-108	C-110	SP-111
C-46 Arrow	5x61/2 Ajax	C-66 Arrow	C-106 Arrow
4/108 Perkins	2-53 Detroit	C-96 Arrow	4-53 Detroit
VRG-155 Waukesha	E-134 Ford	3-53 Detroit	2-71 Detroit
98 Witte	D-172 Ford	4276-D John Deere	3-71 Detroit
100 Witte	E-95 Hartz	F-223 Ford	3304 Cat
120 Witte	E-108 Hartz	J-272 Ford	3208NA Cat
	V-95 Hartz	UD-264 IH	6359-D John Deere
	U-220 IH	D-220-4A MM	UD-350 IH
	HR-2 Lister	3/152 Perkins	HR-4 Lister
	HR-3 Lister	4-203 Perkins	HR-6 Lister
	G-1600 White	VRG-232 Waukesha	HL-3 Lister
	E-15 Witte	VRG-265 Waukesha	HL-4 Lister
		VRG-310 Waukesha	HL-5 Lister
		G-2300 White	D-3364A MM
		G-3000 White	425-6A MM
		E-20 White	4/236 Perkins
			6/354 Perkins
			VRG-220 Arrow
			VRG-330 Arrow
			D-476-D Waukesha
			G-3400 White
			300 Cat
			460 Cat

SP-211	SP-114	SP-214	SPE-211
61/2x8 Ajax	81/2x10 Ajax	8V-71 Detroit	EA-22 Ajax
71/4x8 Ajax	C-255 Arrow	6V-92-N Detroit	EA-30 Ajax
6V-53N Detroit	4-71 Detroit	N-855-P-255 Cummins	
V-378-P-145 Cummins	6-71 Detroit	NT-855-P-355 Cummins	
V-504-P-195 Cummins	3306NA Cat	3306 TA Cat	
3208-T Cat	2LD Dorman	3406 Cat	
6466-D John Deere	3LD Dorman	3408 Cat	
Q-401 Ford	4LD Dorman	8955-T John Deere	
M-477 Ford	67LS Dorman	JA-6 Lister	
HRS-6 Lister	UD525 IH	JAS-6 Lister	
HL-6 Lister	D-504-6A MM	800-6A MM	
HL-T6 Lister	F-674-D Waukesha	F-674-DS Waukesha	
T6-354 Perkins		F-817-G Waukesha	
V8/540 Perkins		WAK Waukesha	
VRG-320 Waukesha		F-90 Witte	
F-476-DS Waukesha			
F-32-A Witte			
F-42-A Witte			
F-70 Witte			

SPE-114	SPE-214	SPE-314
E-42 Ajax	DP-60 Ajax	DP-80 Ajax
	L-1770 Arrow	L-2165 Arrow
		NTA-855-P400 Cummins

* Reference only - requires correct SAE housing and flywheel.

PTO ASSEMBLY DRAWING



pto specifications

PTO Model #	Available SAE Housing Number	Clutch Dia. Ins/mm	Max. Torque rec. lb-ft/kg	Max. engine H.P./M.H.P. Recommended			Max. safe operating speed (RPM)		Aprox. Net Weight lb/kg
				Light Duty	Normal Duty	Heavy Duty	Solid Plate	Split Plate	
C-107	4,5	7 1/2 190.50	234 26.12	53 53.05	35 35.06	27 27.41	3200	3200	55 24.92
C-108	3,4,5	7 1/2 190.50	234 26.12	53 53.05	35 35.06	27 27.41	3100	3050	72 32.62
C-110	2,3,4	7 1/2 190.50	234 26.12	53 53.05	35 35.06	27 27.41	3100	2650	115 52.10
SP-111	2,3	7 1/2 190.50	234 26.12	53 53.05	35 35.06	27 27.41	2850	2200	141 63.88
SP-211 SPE-211	2,3		1090 129.39	239 236.71	159 155.65	120 107.88	2850	2200	155 70.23
SP-114 SPE-114	1	14 355.6	900 123.39	204 317.50	136 138.13	102 102.61	2400	1950	260 117.80
SP-214 SPE-214	0,1	14 355.6	1710 235.16	389 378.13	259 246.43	195 169.48	2500	1950	328 148.61
SP-314 SPE-314	0,1	14 355.6	2565 353.38	583 557.50	389 351.98	292 226.60	2500	1920	408 184.86

Note: dimensions are in inches
MM

housing specifications

SAE Housing Number	A	R	S	T		P
				No.	Dia.	
6	10-1/2	11-1/4	12-1/8	8	13/32	7-3/4
	266.7	285.7	307.9		10.3	196.8
5	12-3/8	13-1/8	14	8	13/32	7-3/4
	314.3	333.3	355.6		10.3	196.8
4	14-1/4	15	15-7/8	12	13/32	7-3/4
	361.9	381	403.2		10.3	196.8
3	16-1/8	16-7/8	17-3/4	12	13/32	9-3/4
	409.5	428.6	450.8		10.3	247.6

SAE Housing Number	A	R	S	T		P
				No.	Dia.	
2	17-5/8	18-3/8	19-1/4	12	13/32	9-3/4
	447.6	466.7	488.9		10.3	247.6
1	20-1/8	20-7/8	21-3/4	12	15/32	9-3/4
	511.2	530.2	552.4		11.9	247.6
0	25-1/2	26-3/4	28	16	17/32	12-3/4
	647.7	679.4	711.2		13.5	323.8

Note: dimensions are in inches
MM

INSTALLATION DETAILS

PTO Model	Housing Length D	Shaft			Clutch Diameter B	C	H	J	Pilot Bearing U			V	W	X	Y	L	Hand Lever Travel OC	Z	Driving Ring Number K
		Dia. F +0.000 -0.001 +0.000 -0.026	Length E	Keyway G					0 +0.0000 -0.0005 +0.0000 -0.0125	Width +0.000 -0.005 +0.000 -0.125	Type								
C-107	5-9/16	1-7/16	3-1/2	3/8 x 3/116	7-1/2	2-13/16	7/8	4-1/2	2.0472	0.5856	205 SF	3	2-1/8	1-5/16	1-5/8	1-3/16	13°	15-3/8	6661
	141.30	36.50	88.9	9.52 x 4.76	190.5	71.44	22.22	114.3	51.99	14.87		76.20	53.97	33.33	41.27	30.16		390.52	
C-108	7-1/16	1-3/4	6	1/2 x 1/4	8	3-15/16	2-11/32	5	2.4409	0.6643	305 SF	3	1-7/8	1-1/4	1-1/2	2-7/16	17°	15-3/8	5805
	179.40	44.45	152.40	12.7 x 6.35	203.20	100.0	59.53	127.0	61.99	18.87		76.20	47.62	31.75	38.10	60.90		390.52	
C-110	8-5/8	2-1/4	5-1/2	5/8 x 5/16	10	3-15/16	3-3/4	5-3/4	2.8346	1.1825	306 SFFC	3	2	1-9/16	1-13/16	2-1/8	15°	15-3/8	6187-A
	219.07	57.15	139.70	15.87 x 7.94	254.0	100.0	95.25	146.05	71.99	30.03		76.20	50.80	39.70	46.04	53.97		390.52	
SP-111	9-1/4	2-1/4	6-1/2	5/8 x 5/16	11-3/8	3-15/16	3-3/4	5-3/4	2.8346	1.1825	306 SFFC	3	3-3/16	1-15/16	2-3/8	1-9/16	15-1/2°	15-3/8	6625-A
	234.95	57.15	165.10	15.87 x 7.94	288.92	100.0	95.25	146.05	71.99	30.03		76.20	80.96	49.20	60.32	39.70		390.52	
SP-211 SPE-211	9-1/4	2-1/4	6-1/2	5/8 x 5/16	11-3/8	3-15/16	3	6-1/2	2.8346	1.1825	306 SFFC	3-3/4	4-1/16	2	2-3/8	1-9/16	15-1/2°	15-3/8	6931
	234.95	57.15	165.10	15.87 x 7.94	288.92	100.0	76.20	165.10	71.99	30.03		95.25	103.20	50.80	60.32	39.70		390.52	
SP-114 SPE-114	9-1/4	2-1/4	6-1/2	5/8 x 5/16	14	3-15/16	3-7/16	6-21/32	3.1496	1.370	307 SFFC	4-1/2	5-7/16	2-9/16	2-15/16	1	18°	23-3/8	5712
	234.95	57.15	165.10	15.87 x 7.94	355.6	100.0	87.31	169.00	79.99	34.80		114.30	138.11	65.10	74.60	25.40		593.72	
SP-214 SPE-214	9-1/4	2-1/4	6-1/2	5/8 x 5/16	14	3-15/16	3-3/8	7-1/2	3.1496	1.370	307 SFFC	4-1/2	6-5/8	2-7/16	2-15/16	1	18°	23-3/8	5713
	234.95	57.15	165.10	15.87 x 7.94	355.6	100.0	85.72	190.50	79.99	34.80		114.30	168.27	61.90	74.60	25.40		593.72	
SP-314 SPE-314	9-1/4	2-1/4	6-1/2	5/8 x 5/16	14	3-15/16	3-3/8	7-1/2	3.9370	1.7717	309 SFFC	4-1/2	7-3/4	2-1/2	2-15/16	1	18°	23-3/8	A-6510
	234.95	57.15	165.10	15.87 x 7.94	355.6	100.0	85.72	190.50	100	45		114.30	196.85	63.50	74.60	25.40		593.72	

Note: dimensions are in inches
MM

ALLOWABLE SIDE-PULL LOADS FOR POWER TAKE-OFFS

PTO	RPM	'X' DISTANCE, INCHES / MM (See Sketch)									
		1/25	2/50	3/75	4/100	5/125	6/150	7/175	8/200	9/225	
C-107	2000	665	595	475							
	3000	302	270	215							
		585	525	475							
C-108	1000	1495	1110	885	735	630					
		680	505	403	334	286					
	2000	1495	1110	885	735	630					
		680	505	403	334	286					
	3000	1495	1110	885	735	630					
		680	505	403	334	286					
C-110	1000	2740	2190	1730	1430	1216					
		1245	995	766	650	552					
	1500	2420	2190	1730	1430	1216					
		1098	995	786	650	552					
	2000	2230	2070	1730	1430	1216					
		1100	940	786	650	552					
2600	2050	1910	1730	1430	1216						
C-111	1000	2790	2600	2240	1840	1570					
		1268	1182	1018	836	713					
	1500	2630	2450	2240	1840	1570					
		1195	1113	1018	836	713					
	2000	2330	2170	2030	1840	1570					
		1059	986	922	836	713					
2400	2140	1990	1865	1750	1570						
SP-111 SPE-111	1000	4540	3395	2710	2255	1930	1690				
		2063	1543	1231	1025	877	768				
	1500	4370	3395	2710	2255	1930	1690				
		1986	1543	1231	1025	877	768				
	2000	3900	3395	2710	2255	1930	1690				
		1772	1543	1231	1025	877	768				
2400	3550	3330	2710	2255	1930	1690					
SP-114 SPE-114	1000	3390	2600	2120	1780	1535	1350	1210	1090		
		1540	1181	963	809	697	613	505	495		
	1500	3390	2600	2120	1780	1535	1350	1210	1090		
		1540	1181	963	809	697	613	505	495		
	2000	3390	2600	2120	1780	1535	1350	1210	1090		
		1540	1181	963	809	697	613	505	495		
2200	3390	2600	2120	1780	1535	1350	1210	1090			
SP-214 SPE-214	1000	5980	4700	3880	3290	2870	2540	2270	2060		
		2718	2137	1763	1495	1304	1154	1031	936		
	1500	5980	4700	3880	3290	2870	2540	2270	2060		
		2718	2137	1763	1495	1304	1154	1031	936		
	2000	5980	4700	3880	3290	2870	2540	2270	2060		
		2718	2137	1763	1495	1304	1154	1031	936		
2200	5980	4700	3880	3290	2870	2540	2270	2060			
SP-314 SPE-314 With 80mm Pilot Bearing	1000	6170	5120	4200	3570	3100	2740	2460	2220	2035	
		2804	2327	1909	1622	1409	1245	1118	1009	925	
	1500	5350	5120	4200	3570	3100	2740	2460	2220	2035	
		2431	2327	1909	1622	1409	1245	1118	1009	925	
	2000	5025	4750	4200	3570	3100	2740	2460	2220	2035	
		2284	2159	1909	1622	1409	1245	1118	1009	925	
2200	4850	4650	4200	3570	3100	2740	2460	2220	2035		
SP-314 SPE-314 With 100mm Pilot Bearing	1000	6170	5850	5580	4720	4110	3630	3260	2945	2690	
		2804	2659	2536	2146	1868	1650	1431	1338	1222	
	1500	5350	5120	4850	4650	4110	3630	3260	2945	2690	
		2431	2327	2204	2113	1868	1650	1431	1338	1222	
	2000	5025	4750	4450	4650	4110	3630	3260	2945	2690	
		2284	2159	2022	2113	1868	1650	1431	1338	1222	
2200	4850	4650	4350	4150	4000	3630	3260	2945	2690		
		2204	2113	1977	1886	1818	1650	1431	1338	1222	

For determination of actual applied load, the following formula should be used.

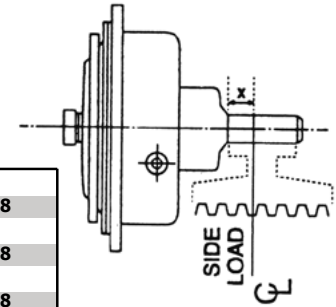
$$L (\text{lbs.}) = \frac{126000 \times \text{H.P.}}{N \times D (\text{inch})} \times F$$

$$L (\text{Kgs.}) = \frac{1430000 \times \text{H.P. (Metric)}}{N \times D (\text{mm})} \times F$$

Where:
 L = Actual load applied
 N = Shaft speed in RPM
 D = Pitch dia. of sheave
 F = Load factor

- * 1.0 for chain or gear drive
- * 1.5 for timing belts
- * 2.5 for all V belts
- * 3.5 for flat belts

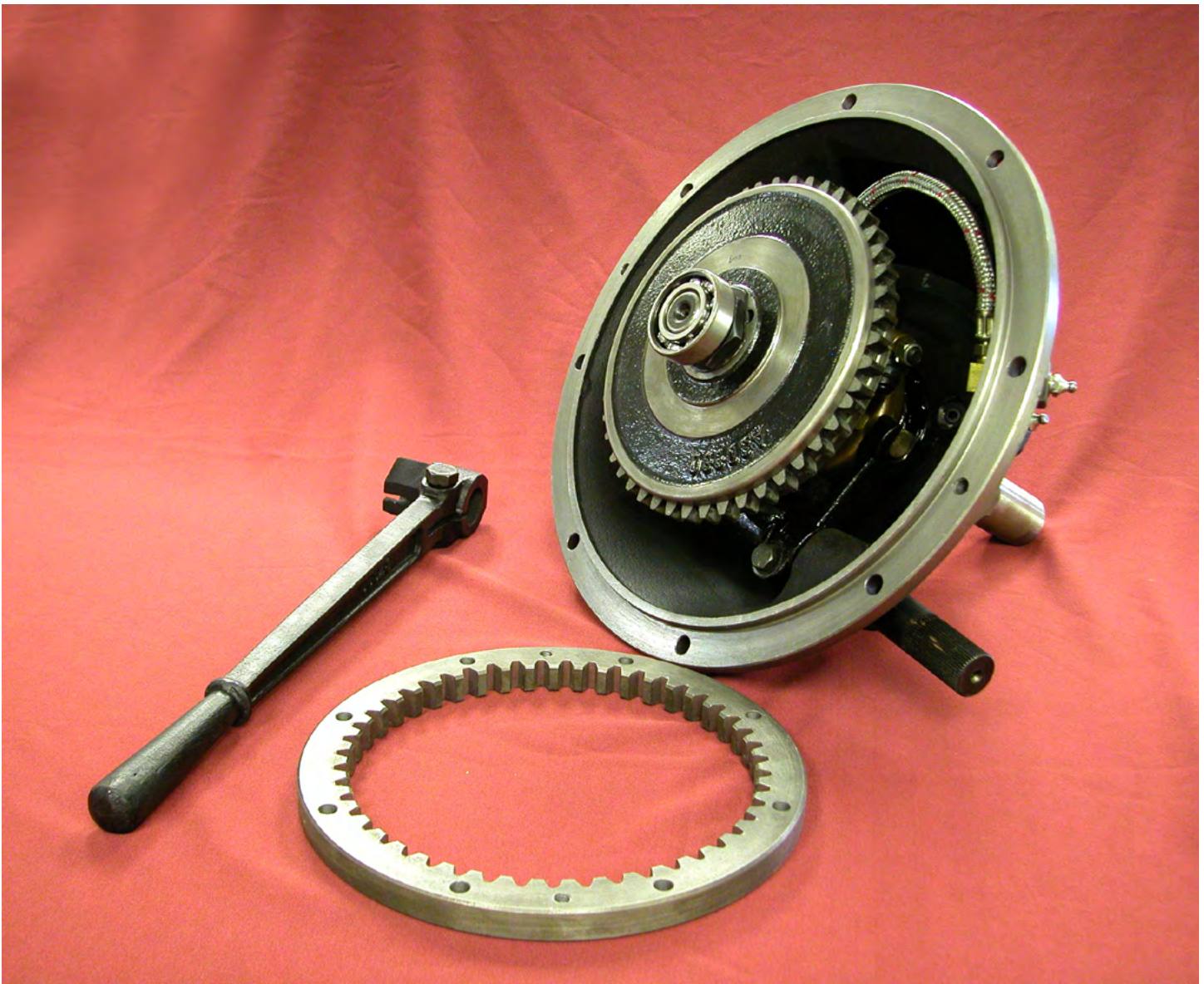
For all the severe shock drives, multiply above factors by 2.1 for added safety.

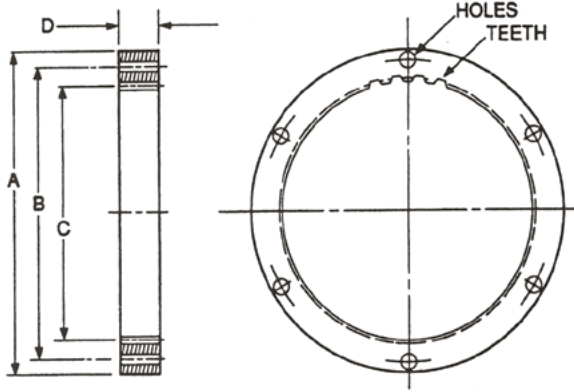


Note: dimensions are in inches / MM

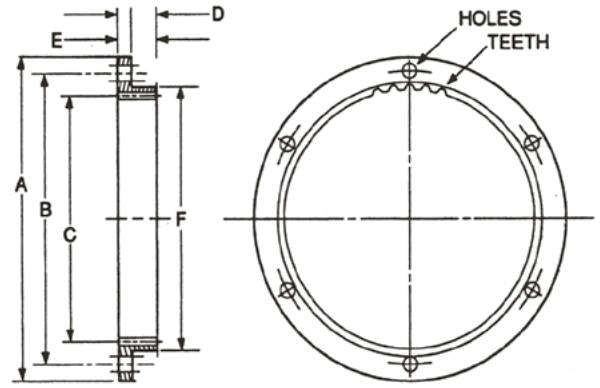
COMPLETE POWER TAKE-OFF'S

C-107-SP-5-DB	7" Power Take-Off with Double Pilot Bearings #5 Housing
C-110-HP-3	10" Power Take-Off #3 Housing
C-110-HP-4	10" Power Take-Off #4 Housing
SP-111-HP-3	11" Power Take-Off #3 Housing Plate
SP-114-P0	14" Power Take-Off #0 Housing Single Plate
SPE-314-P0	14" Power Take-Off #0 Housing Three Plate





"A" TYPE

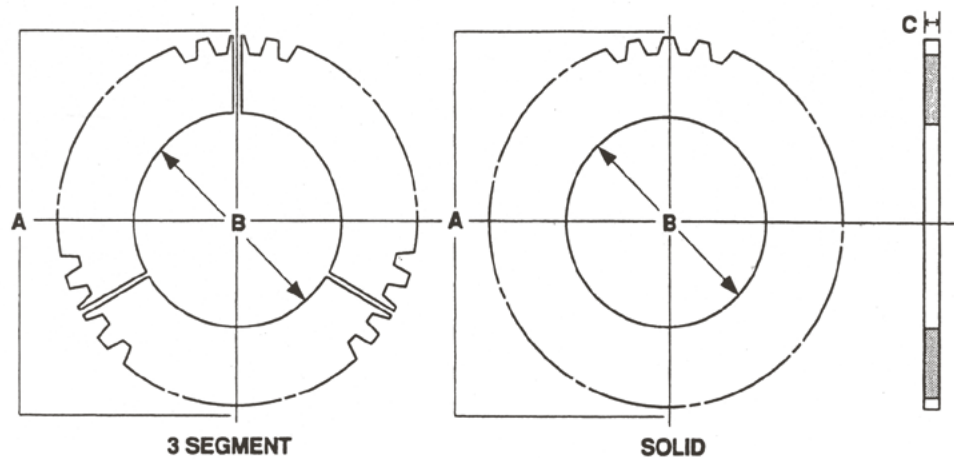


"B" TYPE

DRIVE RING DETAILS

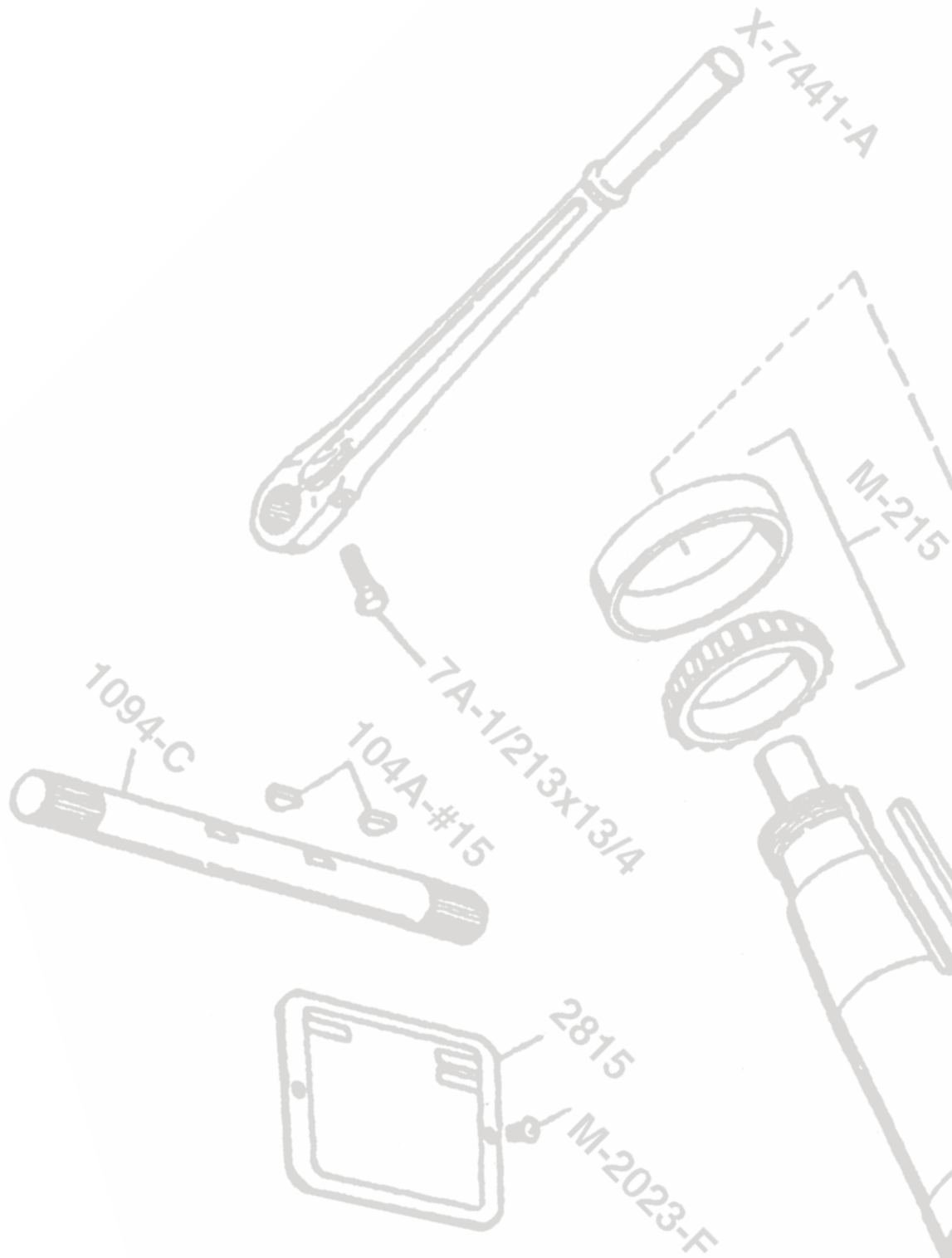
Driving Ring #	Driving Ring Type	A	B	C (Nominal)	D	E	F	Holes		Teeth No.	Approx. Net Weight lb/kg
								No.	Size		
6661	A	9-1/2	8-3/4	7-13/16	5/8	-	-	8	21/64	47	3-3/8
		241.3	225.4	198.4	15.8	8.33	1.53				
5805	A	10-3/8	9-5/8	8-1/2	5/8	-	-	8	13/32	51	4-1/4
		263.5	244.5	215.9	15.8	10.3	1.93				
6187-A	A	12-3/8	11-5/8	10-1/2	7/8	-	-	8	13/32	63	7
		314.3	295.3	266.7	22.2	10.3	3.17				
6625-A	A	13-7/8	13-1/8	12	7/8	-	-	8	13/32	72	8
		352.4	333.4	304.8	22.2	10.3	3.62				
6931	A	13-7/8	13-1/8	12	1-7/8	-	-	8	13/32	72	18
		352.4	333.4	304.8	47.6	10.3	8.16				
5712	B	18-3/8	17-1/4	14-3/4	1-1/8	1/2	16	8	17/32	59	16-1/2
		466.7	438.1	374.6	28.6	12.7	406.4		13.5		7.48
5713	B	18-3/8	17-1/4	14-3/4	2-3/8	1/2	16	8	17/32	59	25-3/4
		466.7	438.1	374.6	60.33	12.7	406.4		13.5		11.67
A-6518	B	18-3/8	17-1/4	14-3/4	3-3/8	1/2	16	8	17/32	59	32-5/8
		466.7	438.1	374.6	85.73	12.7	406.4		13.5		14.78

Note: dimensions are in inches
MM



DRIVE PLATE SPECIFICATIONS

Clutch Plate Part #	Outside Diameter Dim. B	Inside Diameter Dim. B	# Teeth	Thickness Dim. C	# Segments	Drive Ring #
A-5436-A	8-1/4 209.55	4-1/2 114.3	47	7/16 11.11	3	6661
A-5436	8-1/4 209.55	4-1/2 114.3	47	7/16 11.11	1	6661
6479-S	8-3/4 222.25	5-1/2 139.7	51	7/16 11.11	3	5805
6479	8-3/4 222.25	5-1/2 139.7	51	7/16 11.11	1	5805
5878-S	10-3/4 273.05	5-1/2 139.7	63	7/16 11.11	3	6187-A
5878	10-3/4 273.05	5-1/2 139.7	63	7/16 11.11	1	6187-A
06314-F	10-3/4 273.05	5-1/2 139.7	63	7/16 11.11	1	6187-A
A-5579-A	12-1/4 311.15	6-1/4 158.75	72	7/16 11.11	3	1) 6625-A 2) 6931
A-5579	12-1/4 311.15	6-1/4 158.75	72	7/16 11.11	1	1) 6625-A 2) 6931
06310-L	12-1/4 311.15	6-1/4 158.75	72	7/16 11.11	1	1) 6625-A 2) 6931
5659-L	15-5/32 384.97	7 177.80	59	5/8 15.875	3	5712 5713 A-6518
5659-Y	15-5/32 384.97	7 177.80	59	5/8 15.875	1	5712 5713 A-6518
5659-N	15-5/32 384.97	9-1/4 234.95	59	5/8 15.875	3	5712 5713 A-6518
5659-M	15-5/32 384.97	9-1/4 234.95	59	5/8 15.875	1	5712 5713 A-6518
05499-E	15-5/32 384.97	9-1/4 234.95	59	5/8 15.875	1	5712 5713 A-6518

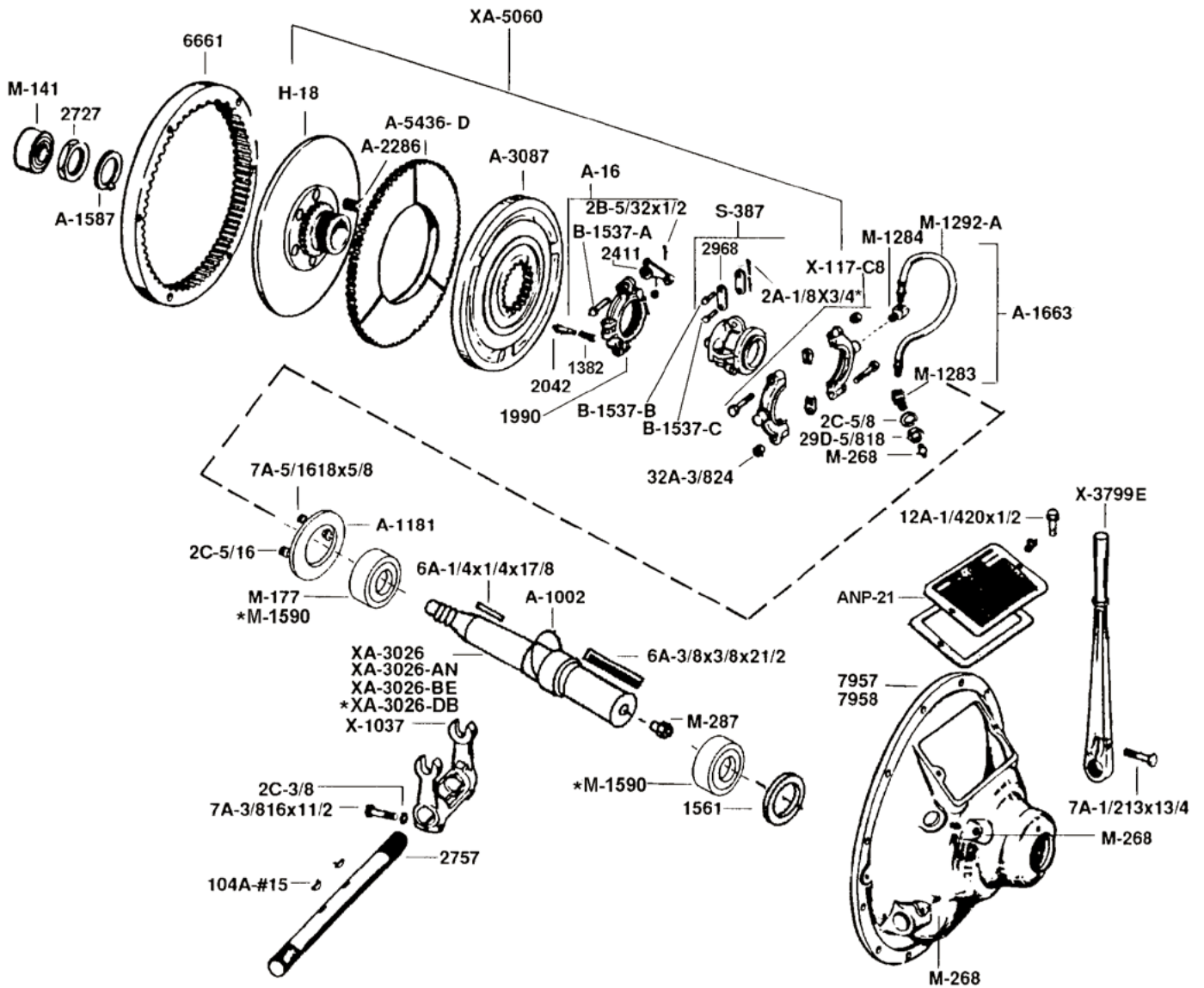


PARTS



PARTS FOR 7" CLUTCH

Complete Assembly: *C-107-SP-4 C-107-SP-5 C-107-SP-5-DB

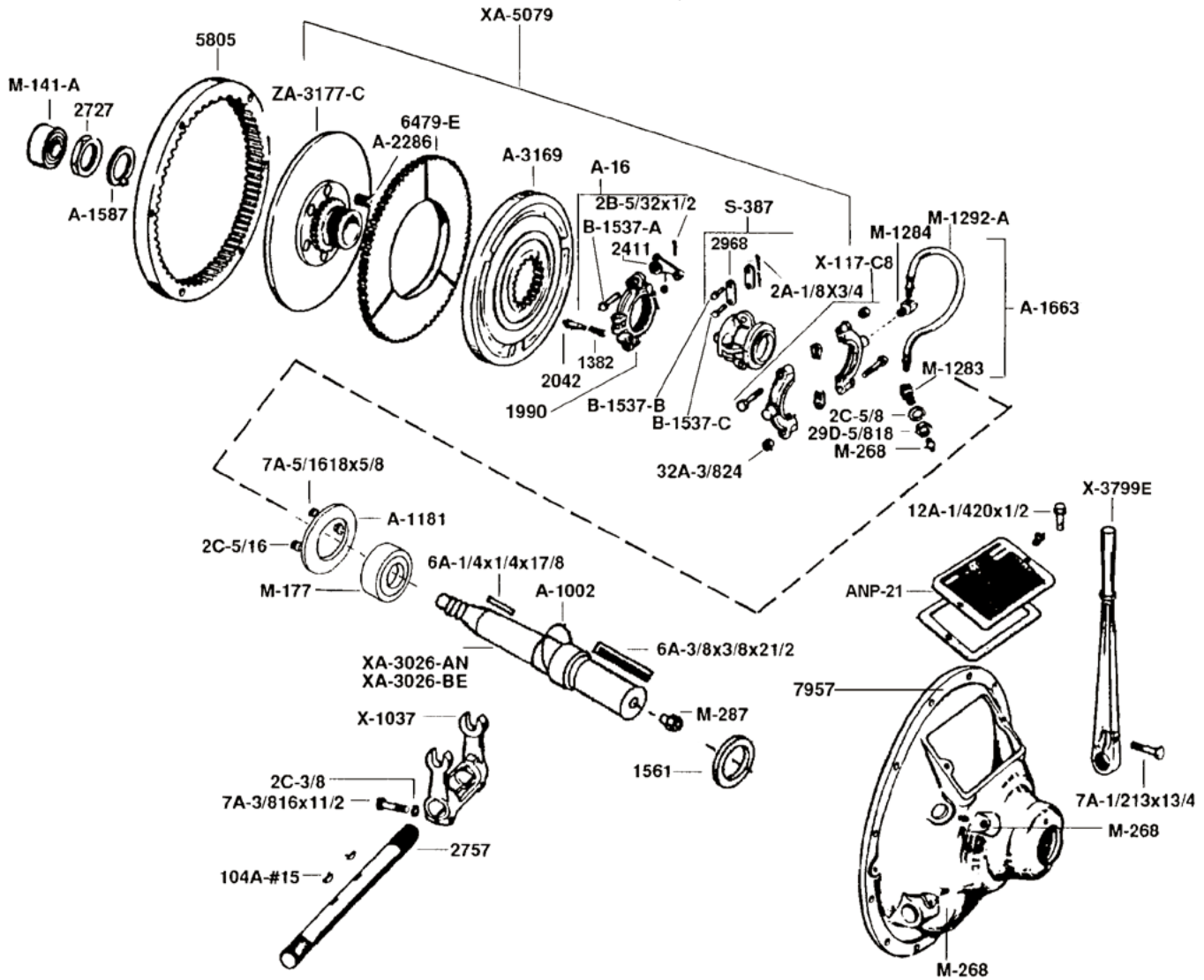


Arrow Part No.	Description	Quantity
104A-#15	Woodruff Key	2
1382	7" Adj. Lock Spring	1
12A-1/420x1/2	Capscrew Hex Hd	1
1561	7, 8" Felt Packing	1
1990	Adjustable Yoke	1
2042	7, 8" Adj Lock Pin	1
2411	7, 8" Finger Lever	4
2727	7, 8" Hub Nut	1
2757	7, 8" Operating Shaft	1
2968	7, 8" Lever Link	1
29D-5/818	Mach. Screw Rd Head	2
2C-3/8	Internal Lockwasher	2
2C-5/16	Internal Lockwasher	1
2C-5/8	Internal Lockwasher	1
2A-1/8x3/4	Cotter Pin	8
2B-5/32x1/2	Tee Head Cotter Pin	4
32A-3/824	Locknut	2
6661	7" Drive Ring	1
6A-1/4x1/4x17/8	Key; Sq. Ends	1
6A-3/8x3/8x21/2	Key; Sq. Ends	1
7957	7" Clutch Housing C-66	1
7958	7" Clutch Housing C-46	1
7A-1/213 x13/4	Tee Head Cotter Pin	4
7A-3/816x11/2	Capscrew Hex Hd	2
7A-5/16x18x5/8	Capscrew Hex Hd	1
A-1002	7,8" Snap Ring	1
A-1181	7,8" Bearing Retainer Ring	1
A-1587	7,8" Lockwasher	1
A-16	7,8" Adjustable Yoke Assembly	1
A-1663	7, 8, 10" Hose Assembly	1
A-2286	7, 8" Release Spring	6
A-3087	7" Floating Plate	1
A-5436-D	7" 3 Peice Drive Plate	1
ANP-21	Spec Plate	1
B-1537-A	7, 8" Finger Lever Pin	4
B-1537-B	7, 8" Finger Lever Pin	4
B-1537-C	7, 8" Lever Link Pin	4
H-18	Hub, Back Plate Assy	1
M-1283	7, 8, 10" Fitting	1
M-1284	7, 8, 10" Fitting	1
M-1292-A	7, 8, 10" Flex Hose	1
M-141	7, 8" Pilot Bearing	1
* M-1590	Clutch Bearing for Double Clutch	2
M-177	7, 8" Pilot Bearing	1
M-268	Lube Fitting-Male	2
M-287	7, 8, 10" Shft Fitting	1
S-387	7, 8" SI Sleeve Assy	1
X-1037	7, 8, 10" Throwout Yoke	1
X-117-C8	7, 8, 10" Collar Assy	1
X-3799E	7, 8, 10" hand Lvr	1
XA-3026	7" Hollow Clutch Shaft (1 7/16")	1
XA-3026-AN	7, 8" Hollow Clutch Shaft (1 3/4")	1
XA-3026-BE	7, 8" Key, Snap Ring	1
* XA-3026-DB	7" Double Bearing Clutch Shaft	1
XA-5060	7" Clutch Assy w/Clutch Plate	1

* for double clutch

PARTS FOR 8" CLUTCH

Complete Assembly: *C-108-HP-4NLA



Arrow Part No.	Description	Quantity
104A-#15	Woodruff Key	2
12A-1/420x1/2	Mach. Screw Rd Head	2
1382	7" Adj. Lock Spring	1
1561	7, 8" Felt Packing	1
1990	Adj. Yoke	1
2042	7, 8" Adj Lock Pin	1
2411	7, 8" Finger Lever	4
2727	7, 8" Hub Nut	1
2757	7, 8" Operating Shaft	1

PARTS FOR 8" CLUTCH

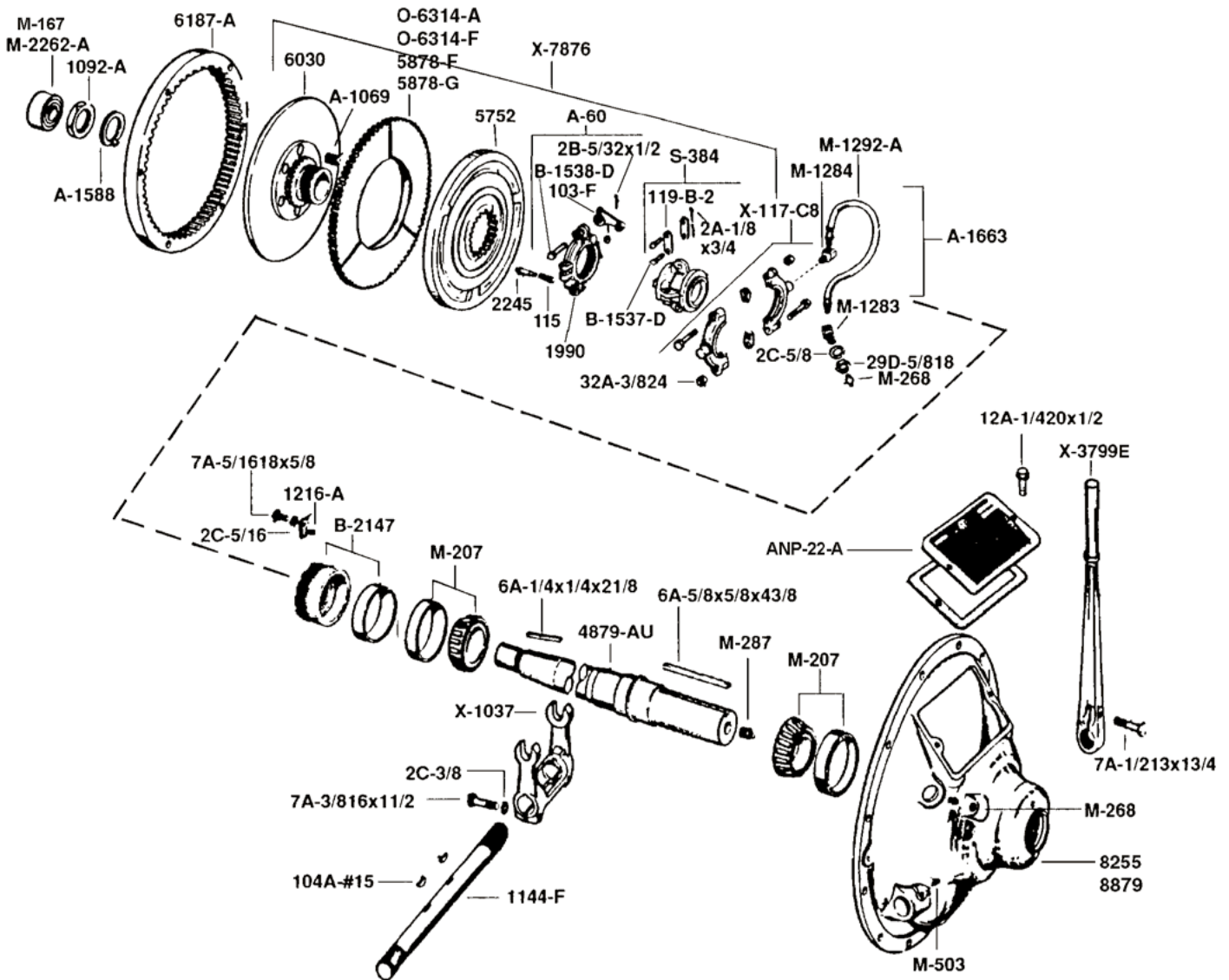
Complete Assembly: C-108-HP-4NLA

Arrow Part No.	Description	Quantity
2968	7, 8" Lever Link	1
29D-5/818	Internal Lockwasher	1
2A-1/8x3/4	Cotter Pin	8
2B-5/32x1/2	Tee Head Cotter Pin	4
2C-5/16	Internal Lockwasher	1
2C-3/8	Internal Lockwasher	2
2C-5/8	Internal Lockwasher	1
32A-3/824	Internal Lockwasher	2
5805	8" Drive Ring	1
6479-E	7" Clutch Plate	1
6A-1/4x1/4x17/8	Key; Sq. Ends	1
6A-3/8x3/8x21/2	Key; Sq. Ends	1
7A-1/213x13/4	Tee Head Cotter Pin	1
7A-3/816x11/2	Capscrew Hex Hd	2
7A-5/16x18x5/8	Capscrew Hex Hd	1
* 7957	Housing	1
A-1002	7,8" Snap Ring	1
A-1181	7,8" Brng Ret Ring	1
A-1587	7,8" Lockwasher	1
A-16	7,8" Adj Yoke Assy	1
A-1663	7, 8, 10" Hose Assy	1
A-2286	7, 8" Release Spring	6
A-3169	8" Floating Plate	1
ANP-21	Spec Plate	1
B-1537-A	7, 8" Finger Lvr Pin	4
B-1537-B	7, 8" Finger Lvr Pin	4
B-1537-C	7, 8" Lever Link Pin	4
M-1283	7, 8, 10" Fitting	1
M-1284	7, 8, 10" Fitting	1
M-1292-A	7, 8, 10" Flex Hose	1
M-141	7, 8" Pilot Bearing	1
M-141-A	7, 8" Sol Shft Bearing	1
M-177	7, 8" Pilot Bearing	1
M-268	Lube Fitting-Male	3
M-287	7, 8, 10" Shft Fitting	1
S-387	7, 8" SI Sleeve Assy	1
X-1037	7, 8, 10" Throwout Yoke	1
X-117-C8	7, 8, 10" Collar Assy	1
X-3799E	7, 8, 10" hand Lvr	1
XA-3026-AN	7, 8" Hollow Clutch Shaft (1 3/4")	1
XA-3026-BE	7, 8" Key, Snap Ring Solid Clutch Shaft	1
XA-5079	8" Clutch-Old Style C-66 (ref. only)	1
* ZA-3177-C	Hub, Back Plate Assy	1

* Call for Availability

PARTS FOR 10" CLUTCH

Complete Assembly: C-110-HP-4 & C-110-HP-3



Arrow Part No.	Description	Quantity
103-F	10" Finger Lever	4
104A-#15	Woodruff Key	2
1092-A	10" Hub Nut	1
1144-F	10" Operating Shaft	1
115	10" Adj. Lock Spring	1
119-B-2	10" Lever Link	1
1216-A	10" Bearing Retainer Lock	4
12A-1/420x1/2	Mach. Screw Rd Head	2
1990	Adj. Yoke	1
2245	10" Adj Lock Pin	1
29D-5/818	Internal Lockwasher	1

PARTS FOR 10" CLUTCH

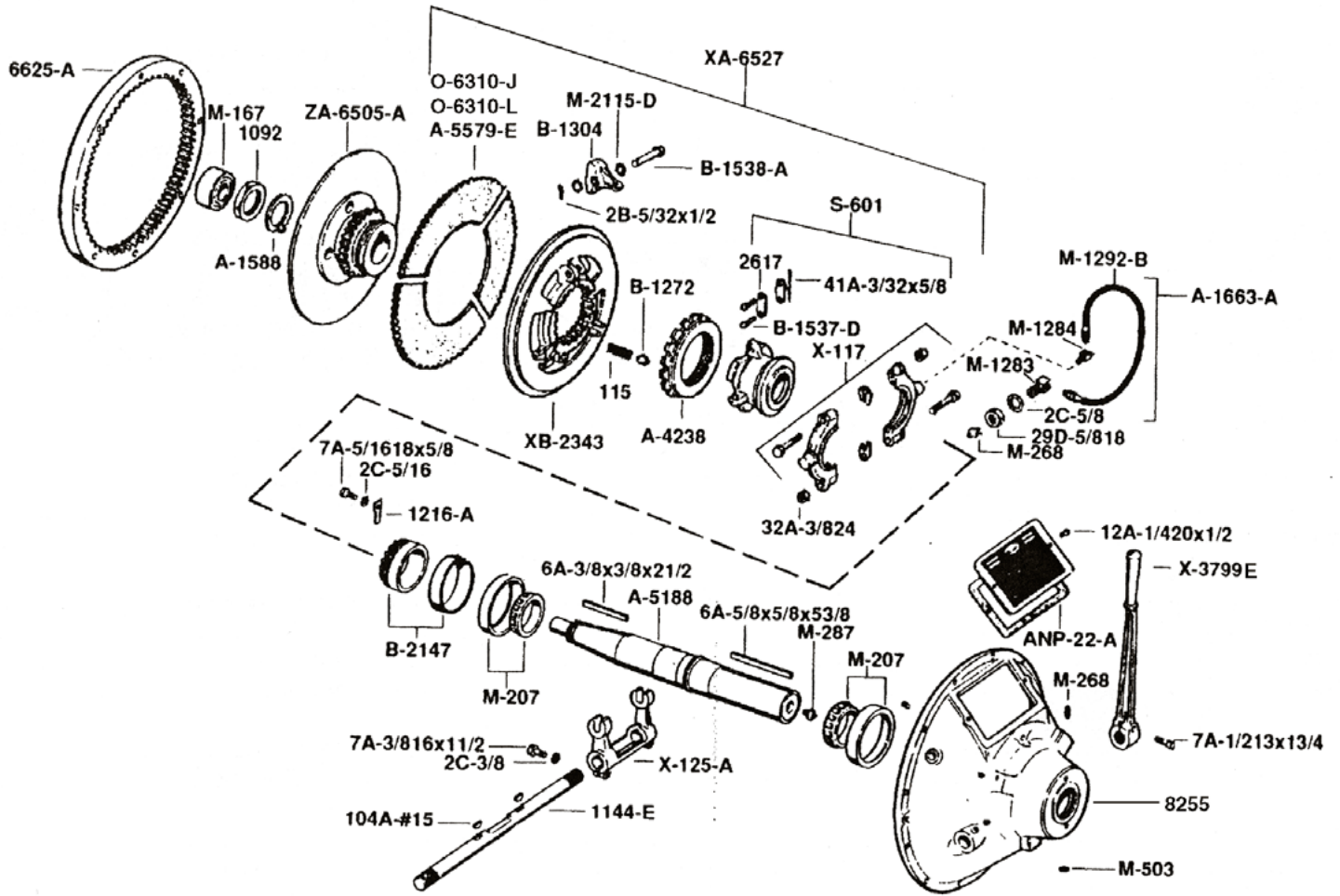
Complete Assembly: C-110-HP-4 & C-110-HP-4

Arrow Part No.	Description	Quantity
2A-1/8x3/4	Cotter Pin	8
2B-5/32x1/2	Tee Head Cotter Pin	4
2C-5/16	Internal Lockwasher	1
2C-3/8	Internal Lockwasher	2
2C-5/8	Internal Lockwasher	1
32A-3/824	Internal Lockwasher	2
4879-AU	10" Sol Clutch Shaft	1
5752	10" Floating Plate	1
optional 5878-F	10" 3 Pc Drive Plate - 1 Piece	1
5878-G	10" 3 Pc Drive Plate	1
6030	Hub, Back Plate Assy	1
6187-A	10" Drive Ring	1
6A-1/4x1/4x21/8	Key; Sq. Ends	1
6A-5/8x5/8x43/8	Key; Sq. Ends	1
7A-5/1618x5/8	Key; Sq. Ends	1
7A-3/816x11/2	Key; Sq. Ends	2
7A-1/213x13/4	Capscrew Hex Hd	1
8255	10" Clutch Housing - C96	1
* 8879	10" Clutch Housing - C66	1
A-1069	10" Release Spring	1
A-1588	10" Lockwasher	1
A-1663	7, 8, 10" Hose Assy	1
A-60	10" Adj Yoke Assy	1
ANP-22-A	Spec Plate	1
B-1537-D	10" Lever Link Pin	4
B-1538-D	10" Finger Link Pin	4
B-2147	10" Bearing Spacer	1
M-1283	7, 8, 10" Fitting	1
M-1284	7, 8, 10" Fitting	1
M-1292-A	7, 8, 10" Flex Hose	1
M-167	10" Pilot Bearing - C66	1
M-207	10" Clutch Bearing	2
M-2262-A	10" Pilot Bearing - C96	1
M-268	Lube Fitting-Male	2
M-287	7, 8, 10" Shft Fitting	1
optional M-503	Grease Fitting Shaft	1
optional O-6314-A	Drive Plate Aluminum Teeth - 1 Piece	1
O-6314-F	Drive Plate SS Teeth - 1 Piece	1
S-384	10" SI Sleeve Assy	1
X-1037	7, 8, 10" Throwout Yoke	1
X-117-CB	7, 8, 10" Collar Assy	1
X-3799E	7, 8, 10" hand Lvr	1
X-7876	Clutch Assembly	1

* Call for Availability

PARTS FOR 11" CLUTCH

Complete Assembly: SP-111-HP-3



PARTS FOR 11" CLUTCH

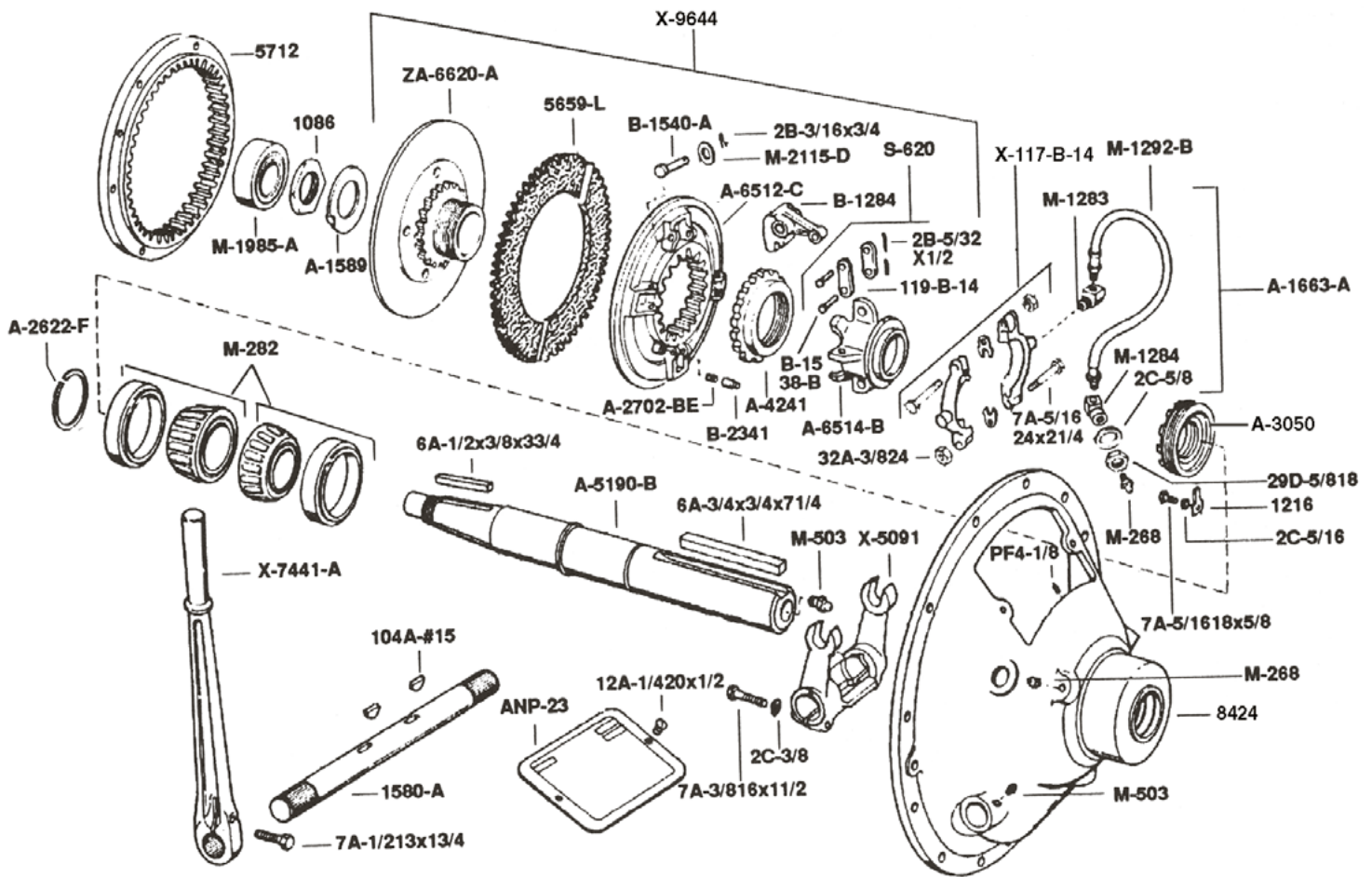
Complete Assembly: SP-111-HP-3

Arrow Part No.	Description	Quantity
104A-#15	Woodruff Key	1
1092	11" Hub Nut	1
1144-F	11" Operating Shaft	1
115	10" Adj. Lock Spring	1
1216-A	10" Bearing Retainer Shaft	1
12A-1/420x1/2	Mach. Screw Rd Head	1
2617	11" Lever Link	1
29D-5/818	Jam Nut Finished Hex	2
2B-5/32x1/2	Tee Head Cotter Pin	4
2C-3/8	Internal Lockwasher	2
2C-5/16	Internal Lockwasher	1
2C-5/8	Internal Lockwasher	1
32A-3/824	Locknut	8
41A-3/32x5/8	Roll Pin	2
6625-A	11" Drive Ring	1
6A-3/8x3/8x21/2	Key; Sq. Ends	1
6A-5/8x5/8x53/8	Key; Sq. Ends	1
7A-1/213x13/4	Capscrew Hex Hd	2
7A-3/816x11/2	Capscrew Hex Hd	1
7A-5/1618x5/8	Capscrew Hex Hd	1
* 8255	11" Clutch Housing (VRG 330, C-106)	1
A-1588	10" Lockwasher	1
A-1663-A	11" Hose Assembly	1
A-4238	Adj. Ring C-106	1
A-5188	11" Clutch Shaft	1
A-5579-E	11" 3 Pc Dr Plate	1
ANP-22-A	Spec Plate C-Series	1
B-1272	11" Adj Lock Pin	1
B-1304	11" Finger Lever	3
B-1537-D	10" Lvr Link Pin	8
B-1538-A	11" Finger Lvr Pin	3
B-2147	10" Bearing Spacer	1
M-1283	7, 8, 10" Fitting	1
M-1284	7, 8, 10" Fitting	1
M-1292-B	Flex Hose	1
M-167	10" Pilot Bearing	1
M-207	10" Clutch Bearing	2
M-2115-D	Spring Washer	8
M-268	Lube Fitting-Male	2
M-287	7, 8, 10" Shft Fitting	1
M-503	Grease Fitting Shaft	1
O-6310-J	Drive Plate Alum Teeth	1
O-6310-L	Drive Plate SS Teeth	1
S-601	11" SI Sleeve Assembly	1
X-117	11" Collar Assembly	1
X-125-A	11" Throwout Yoke	1
X-3799E	7, 8, 10" Hand Lvr	1
XA-6527	Clutch Assy-Sngl Row	1
XB-2343	11" Floating Plate	1
ZA-6505-A	11" Hub, Bk Pit Assembly	1

* Call for Availability

PARTS FOR 14" CLUTCH

Complete Assembly: SP-114-PO



Arrow Part No.	Description	Quantity
104A-#15	Woodruff Key	2
1086	Hub Nut	1
119-B-14	Lever Link	1
1216	Bearing Retainer Lock	1
12A-1/420x1/2	Mach. Screw Rd Head	2
1580-A	Operating Shaft	1
29D-5/818	Jam Nut Finished Hex	1
2B-3/16x3/4	Cotter Pin Tee head	1
2B-5/32x1/2	Tee Head Cotter Pin	1
2C-3/8	Internal Lockwasher	2
2C-5/16	Internal Lockwasher	1
2C-5/8	5/8 Int Lockwasher	1
32A-3/824	Locknut	2
5659-L	Dr Plate-3 Pc 4" JD	1
5659-N	Drive Plate	1

PARTS FOR 14" CLUTCH

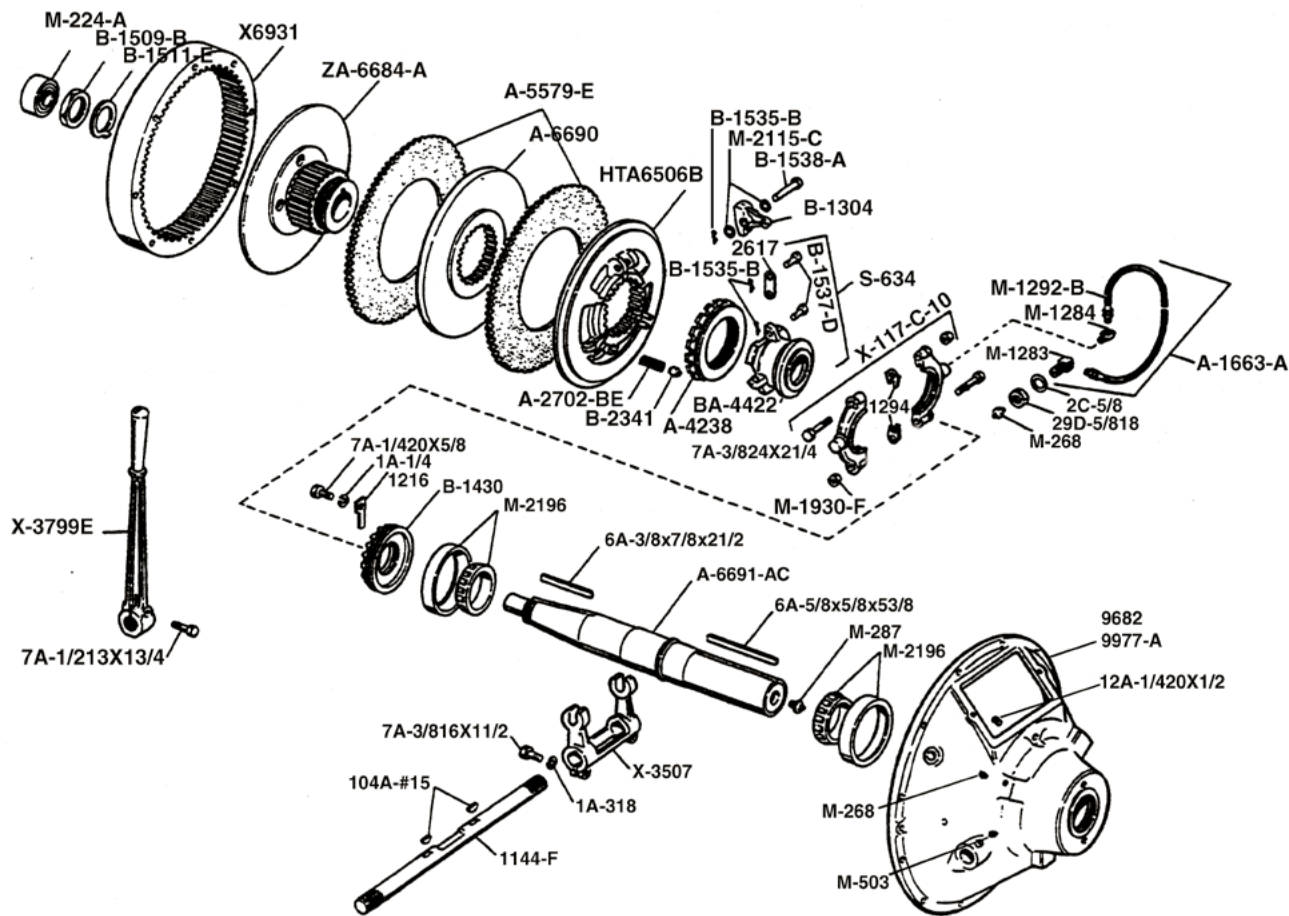
Complete Assembly: SP-114-P0

Arrow Part No.	Description	Quantity
5712	Driving Ring-C255	1
6A-1/2x3/8x33/4	Key; Sq Ends	1
6A-3/4x3/4x71/4	Key; Sq Ends	1
7A-1/213x13/4	Capscrew Hex Hd	4
7A-3/816x11/2	Capscrew Hex Hd	8
7A-5/1618x5/8	Capscrew Hex Hd	4
7A-5/1624x21/4	Capscrew Hex Hd	1
* 8424	Clutch Housing	1
A-1589	Lockwasher	1
A-1663-A	11" Hose Assembly	1
A-2622-F	Snap Ring	1
A-2702-BE	Adj Lock Pin Spring	1
A-3050	Bearing Retainer	1
A-4241	Adjusting Ring	1
A-5190-B	Clutch Shaft-C255	1
A-6512-C	Plate Drive	1
A-6514-B	Sliding Sleeve	1
ANP-23	9x6 PTO Spec Plate	1
B-1284	Finger Lever	4
B-1538-B	Lever Link Pin	8
B-1540-A	Lever Pin	4
B-2341	Adj Lock Pin	1
M-1283	7, 8, 10" Fitting	1
M-1284	7, 8, 10" Fitting	1
M-1292-B	Flex Hose	1
M-1985	Pilot Bearing, 2 Piece	1
M-2115-D	Spring Washer	8
M-268	Lube Fitting Male	2
M-282	Roller Bearing	2
M-503	Grease Fitting Shft	1
O-5499-E	Drive Plate SS Teeth	1
PF4-1/8	1/8 Sq Hd Pipe Plug	1
S-620	SI Sleeve Assembly	1
X-117-B-14	Collar Assembly	1
X-5091	Throwout Yoke	1
X-7441-A	Hand Lever	1
X-9644	Clutch Assembly	1
ZA-6620-A	Hub, Bk Pit-Taper Bore	1

* Call for Availability

PARTS FOR 11" CLUTCH

Complete Assembly: SP-211-HP



Arrow Part No.	Description	Quantity
104A-#15	Woodruff Key	2
1144-F	10" Operating Shaft	1
1216	Bearing Retainer Lock	1
12A-1/420x1/2	Round Head Screw	2
1A-1/4	Lock Washer	1
1A-3/8	Lock Washer	2
2617	Lever Link	6
29D-5/818	Jam Nut	1
2C-5/8	Lock Washer	1
* 6A-3/8x7/8x21/2	Key	1
* 6A-5/8x5/8x53/8	Key	1
7A-1/213x13/4	Hex Headed Cap Screw 1/2-13 x 13/4	1
7A-1/420x5/8	Hex Headed Cap Screw 1/4-20 x 5/8	1
7A-3/816x11/2	Hex Headed Cap Screw 3/8-16 x 11/2	2

PARTS FOR 11" CLUTCH

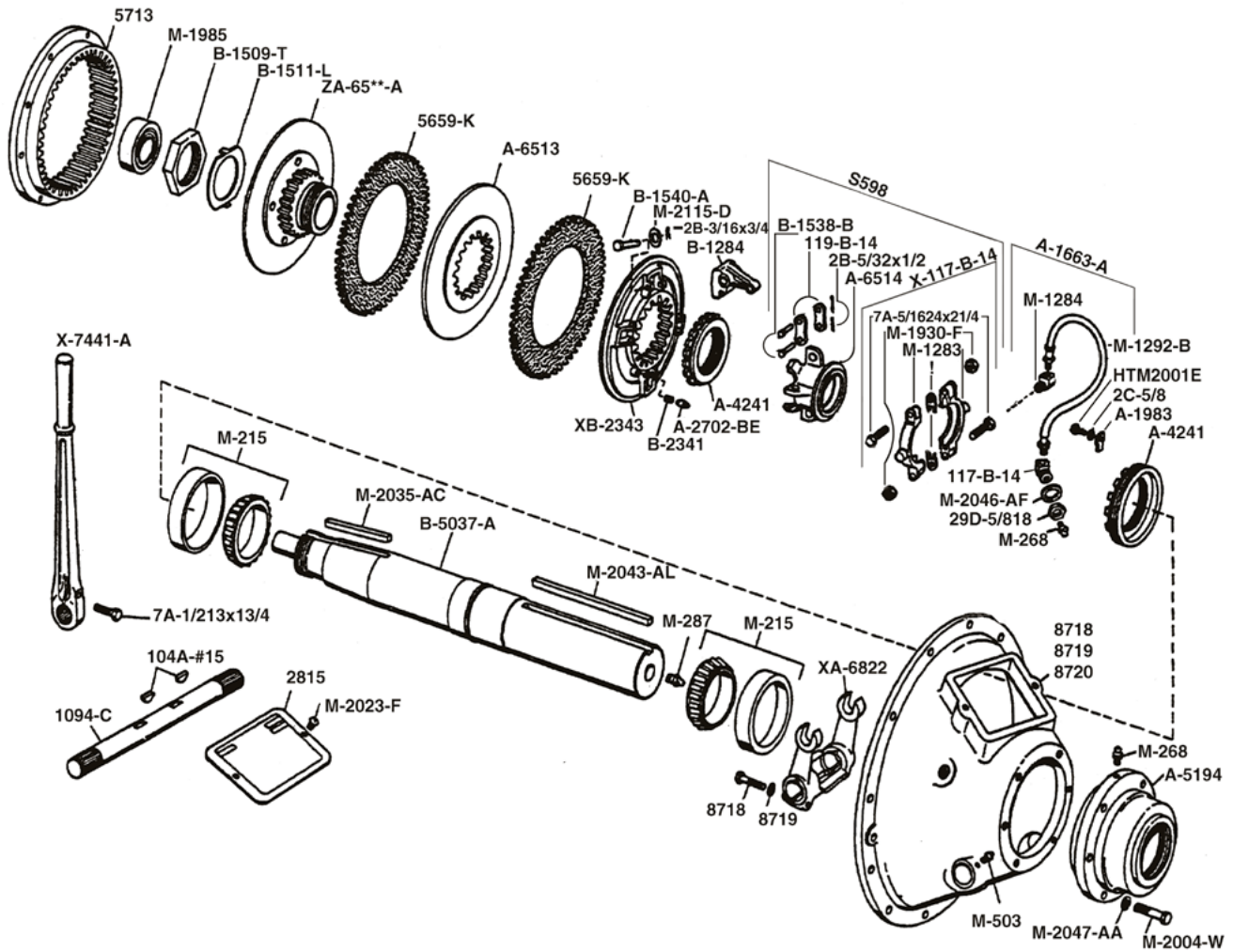
Complete Assembly: SP-211-HP

Arrow Part No.	Description	Quantity
7A-3/824x21/4	Hex Headed Cap Screw $3/8-24 \times 2\ 1/4$	2
* 9682	Housing #2 SAE	1
* 9977-A	Housing #3 SAE NLA	1
A-1663-A	Hose Assembly	1
A-2702-BE OR A-2704-BB	Spring (Obsolete)	1
A-4238	Adjusting Ring - C-106	1
A-4422	Sliding Sleeve (Obsolete)	1
A-5579-E	11" Driving Plate, 3 Piece	2
* A-6690	Center Plate	1
A-6691-AC	Clutch Shaft with Keys	1
ANP-22-A (not shown)	Instruction Cover Plate	1
B-1304	Finger Lever	3
B-1430	Bearing Retainer	1
B-1509-B	Hub Nut	1
B-1511-E	Lock Washer (Obsolete)	1
B-1537-B	Cotter Pin	3
B-1537-D	Lever Pin	6
B-1538-A	Lever Pin	3
B-2341	Adjusting Block Pin	1
HTA-6506-B	Floating Plate (Obsolete)	1
M-1283	Fitting	1
M-1284	Fitting	1
M-1292-B	14" Flexible Hose	1
* M-1930-F	Hex Nut	2
M-2115-C	Spring Washer	6
M-2196	Roller Bearing	1
M-224-A	Pilot Bearing	1
M-268	Fitting	2
M-287	Shaft Fitting	1
M-503	Fitting	1
S-634	Sliding Sleeve Assembly	1
X-117-C-10	Collar Assembly	1
* X-3507	Throwout Yoke	1
X-3799E	Hand Lever	1
X6931	Driving (or Spider) Ring	1
* ZA-6684-A	Hub-and-Back Plate	1

* Call for Availability

PARTS FOR 14" CLUTCH

Complete Assembly: SP-214-PL



Arrow Part No.	Description	Quantity
104A-#15	Woodruff Key	2
* 1094-C	Operating Shaft	1
* 117-B-14	Split Collar	1
119-B-14	Lever Link	8
* 1293	Shim	2
1580-A	Operating Shaft (SAE #0 Housing)	1
* 2815	Instruction Plate Cover	1
29D-5/818	3/4" Hex Jam Nut	1
2B-3/16x3/4	Cotter Pin	8
2B-5/32x1/2	Cotter Pin	4
2C-5/8	Lock Washer	1
* 35058	Clutch Assembly (Solid Drg, Plate - Standard)	1
* 35071	Clutch Assembly (Sintered Drg. Plate - Optional)	1
* 5659-K (59T)	Solid Drive Plate (Standard)	2

PARTS FOR 14" CLUTCH

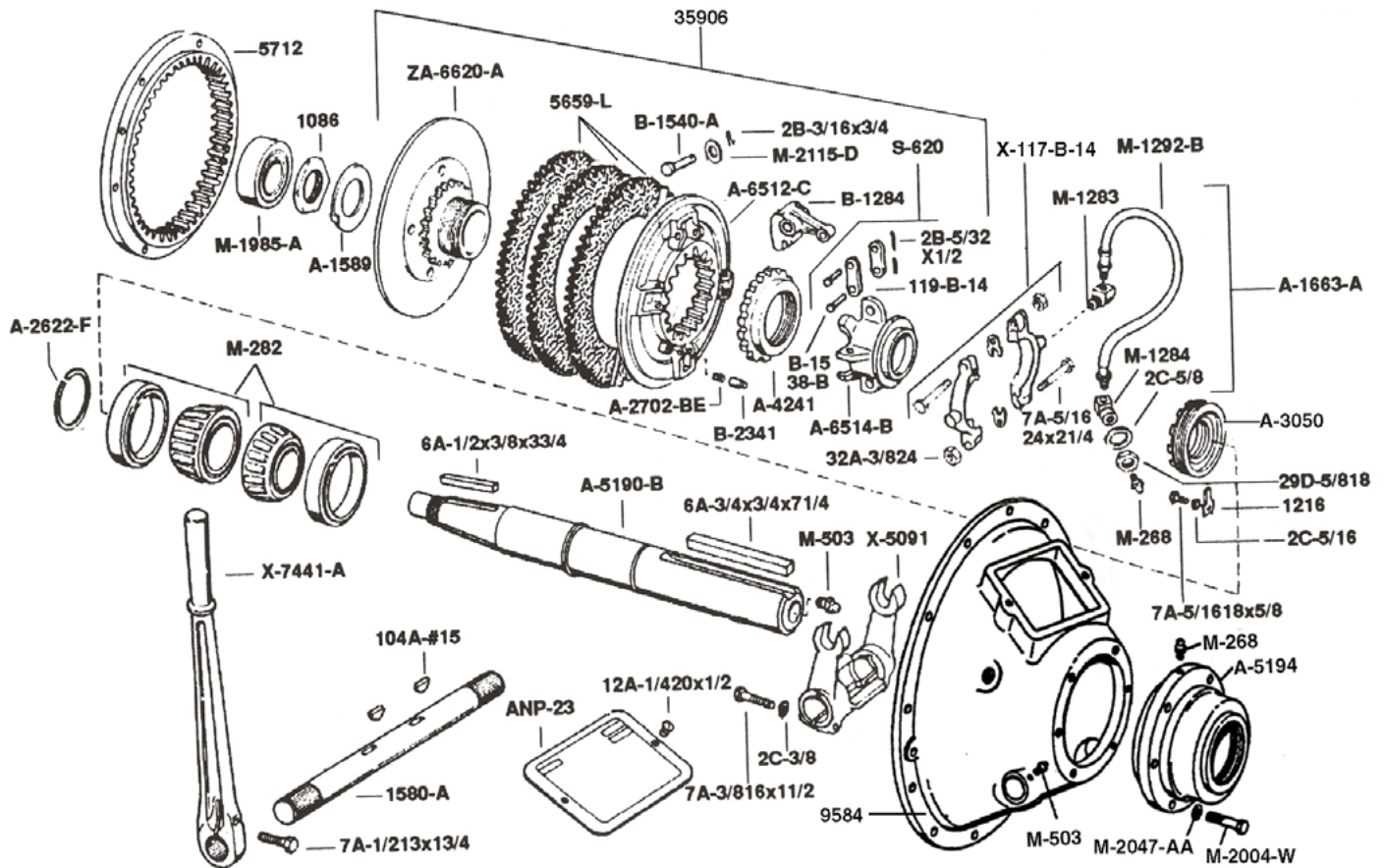
Complete Assembly: SP-214-PL

Arrow Part No.	Description	Quantity
5659-L (59T) (not shown)	Split Drive Plate	2
5713	Drive Ring	1
7A-1/213x13/4	Capscrew	1
* 7A-5/1624x21/4	Capscrew	28718 Housing 1
* 8719	Housing	1
* 8720	Housing (Obsolete)	1
A-1663-A	Flexible Hose Assembly	1
A-1983	Bearing Retainer Lock	1
A-2702-BE	Adjusting Lock Pin Spring	1
* A-3308-B	Bearing Retainer	1
A-4241	Clutch Adjusting Ring	1
* A-5189	Clutch Shaft (for 309 Pilot Brg. - Solid)	1
A-5194	Bearing Carrier	1
A-6513	Center Plate	1
A-6514-A OR A-6514-B	Sliding Sleeve	1
B-1284	Finger Lever	4
B-1509-T	Hex Nut Hub	1
B-1511-L	Hub Lock Washer	1
B-1538-B	Link Lever Headed Pin	8
B-1540-A	Lever Headed Pin	4
B-2341	Adjusting Lock Pin Ring	1
HTM2001E	Hex-Head CapScrew	1
M-1283	Fitting	1
M-1284	Fitting	1
M-1292-B	14" Flexible Hose	1
* M-1930-F	Locknut	1
M-1985	Pilot Bearing	1
* M-2004-W	Hex Head Cap Screw - 1/2-12 x 2	6
* M-2023-F	Round Head Machine Screw - 1/4-20 x 1/2	2
* M-2034-AL	Output Shaft Key	1
* M-2035-AC	Hub & Back Plate Key	1
* M-2046-AF	Lock Washer	1
* M-2047-AA	Lock Washer - 1/2"	6
M-2115-D	Spring Washer	8
M-215 OR M-214	Tapered Roller Bearing	2
M-268	Hydraulic Fitting	2
M-287	1/4" Hydraulic Fitting	1
M-503	Hydraulic Fitting	2
O-5499-E (59T) (not shown)	Sintered Drive Plate 2	
* S598	Sliding Sleeve Assembly	1
X-117-B-14	Collar Assembly	1
X-7441-A	Hand Lever	1
* XA-6822	Throwout Yoke	1
XB-2343	Floating Plate	1
ZA6605-A OR ZA6620-A	Hub and Back Plate	1

* Call for Availability

PARTS FOR 14" CLUTCH

Complete Assembly: SPE-314-PO



Arrow Part No.	Description	Quantity
104A-#15	Woodruff Key	2
1086	Hub Nut	1
119-B-14	Lever Link	1
1216	Bearing Retainer Lock	1
12A-1/420x1/2	Mach. Screw Rd Head	2
1580-A	Operating Shaft	1
29D-5/818	Jam Nut Finished Hex	1
2B-3/16x3/4	Cotter Pin Tee head	1
2B-5/32x1/2	Tee Head Cotter Pin	1
2C-3/8	Internal Lockwasher	2
2C-5/16	Internal Lockwasher	1
2C-5/8	5/8 Int Lockwasher	1
32A-3/824	Locknut	2
* 35906	Clutch Assembly	1
5659-L	Dr Plate-3 Pc 4" JD	2

Two peice housing replaces the one peice housing.

PARTS FOR 14" CLUTCH

Complete Assembly: SPE-314-P0

Arrow Part No.	Description	Quantity
5659-N	Drive Plate	1
6A-1/2x3/8x33/4	Key; Sq Ends	1
6A-3/4x3/4x71/4	Key; Sq Ends	1
7A-1/213x13/4	Capscrew Hex Hd	4
7A-3/816x11/2	Capscrew Hex Hd	8
7A-5/1618x5/8	Capscrew Hex Hd	4
7A-5/1624x21/4	Capscrew Hex Hd	1
* 9584	Clutch Housing	1
A-1589	Lockwasher	1
A-1663-A	11" Hose Assembly	1
A-2622-F	Snap Ring	1
A-2702-BE	Adj Lock Pin Spring	1
* A-3050	Bearing Retainer	1
A-4241	Adjusting Ring	1
A-5190-B	Clutch Shaft-C255	1
A-5194	Bearing Carrier	1
A-6512-C	Plate Drive	1
A-6514-B	Sliding Sleeve	1
A-6518-A	Driving Ring	1
ANP-23	9x6 PTO Spec Plate	1
B-1284	Finger Lever	4
B-1538-B	Lever Link Pin	8
B-1540-A	Lever Pin	4
B-2341	Adj Lock Pin	1
M-1283	7, 8, 10" Fitting	1
M-1284	7, 8, 10" Fitting	1
M-1292-B	Flex Hose	1
M-1985	Pilot Bearing, 2 Piece	1
* M-2004-W	Capscrew	6
* M-2047-AA	Lock Washer	6
M-2115-D	Spring Washer	8
M-268	Lube Fitting Male	2
M-282	Roller Bearing	2
M-503	Grease Fitting Shft	1
O-5499-E	Drive Plate SS Teeth	1
PF4-1/8	1/8 Sq Hd Pipe Plug	1
S-620	SI Sleeve Assembly	1
X-117-B-14	Collar Assembly	1
X-5091	Throwout Yoke	1
X-7441-A	Hand Lever	1
ZA-6620-A	Hub, Bk Pit-Taper Bore	1

* Call for Availability

REPAIR KITS FOR C-SERIES CLUTCHES

Part #	Description	Qty.
SP-111-HP-KIT	C-106 & VR-330	
M-167	PILOT BEARING	1
M-207	SHAFT MAIN BEARING	2
X-117	COLLAR ASSY.	1
M-1292-B	FLEX HOSE	1
A-5579-E	CLUTCH PADS (3 pieces)	1
A-1588	LOCK WASHER	1
1092	HUB NUT	1
M-503	GREASE ZERT	1
M-268	GREASE ZERT	2

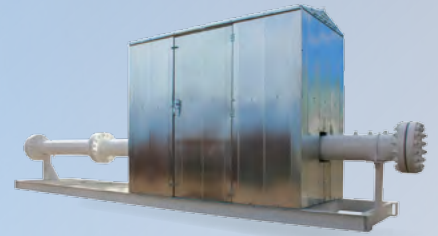
C-110-HP-KIT	C-66 & C-96	
M-167	PILOT BEARING	1
M-2262-A	PILOT BEARING	1
M-207	SHAFT MAIN BEARING	2
X-117-C8	COLLAR ASSY.	1
M-1292-A	FLEX HOSE	1
5878-G	CLUTCH PADS (3 pieces)	1
A-1588	LOCK WASHER	1
1092-A	HUB NUT	1
M-503	GREASE ZERT	1
M-268	GREASE ZERT	2
A-1069	RELEASE SPRING	6

C-108-HP-KIT	C-66	
<i>WITH 8" CLUTCH</i>		
M-141-A	PILOT BEARING	1
M-177	SHAFT MAIN BEARING	1
X-117-C8	COLLAR ASSY.	1
M-1292-A	FLEX HOSE	1
6479-E	CLUTCH PADS (3 pieces)	1
A-1587	LOCK WASHER	1
2727	HUB NUT	1
M-268	GREASE ZERT	2
A-2286	RELEASE SPRINGS	6

Part #	Description	Qty.
C-107-SP-KIT	C-46 & C-66	
<i>SINGLE or DOUBLE BEARING CLUTCH</i>		
M-141	PILOT BEARING	1
M-177	SHAFT MAIN BEARING	1
M-1590	MAIN BEARING for DOUBLE CLUTCH	2
X-117-C8	COLLAR ASSEMBLY	1
M-1292-A	FLEX HOSE	1
A-5436-D	CLUTCH PADS (3 pieces)	1
A-1587	LOCK WASHER	1
2727	HUB NUT	1
M-268	GREASE ZERT	2
A-2286	RELEASE SPRINGS	6



Quality Products Engineered to Last





C-SERIES	C-46	C-66	C-96	C-101	C-106	C-255
A-SERIES	A-32	A-42	A-54	A-62 A-62 Turbo A-62 Genset	A-90 A-90 Turbo A-90 Genset	A-160 A-160 Turbo A-160 Genset
K-SERIES	K6					
L-SERIES	L-795					



GAS PRODUCTS	Meter Runs Meter Skids	Volume Tanks Coalescers Structural Skids	2 & 3-Phase Separators Fuel Gas Cond. Skid	Heater Treater Indirect Heater H2S Scavenger Unit	Dehydration Unit Liquid Stabilizer
CHEMICAL PUMPS	10 Series (beam operated)	430 Series (electric)	12, 500, & 510 Series (pneumatic)	Solar Chemical Pumps	OEM & Aftermarket Spare Parts



COMPRESSION PRODUCTS	Compressor Frames VRC-2 VRS-2 VRS-4 (Coming Soon)	CNG Compressor Frames & Packages VRC-CNG	Vapor Recovery Units VRU-1 VRU-2	Gas Lift Packages Electric HP Gas Engine (VR, A-Series, Cat)	Custom Compression Packages
-----------------------------	--	--	--	---	-----------------------------------

Arrow Engine Company
2301 East Independence • Tulsa, Oklahoma 74110
fax (918) 699-2202
local (918) 583-5711



(800) 331-3662

www.ArrowEngine.com



CATERPILLAR®	G379	G398	G399	G3304	G3306
WAUKESHA®	F2895 F3521 F5108	L5790 L7042	P9390	145G/F817 140G/F554	F18 H24 WAK/1197
FAIRBANKS®	ZC-118	ZC-208	ZC-503	ZC-739	ZC-346
AJAX®	5x 6½	EA-22, 6½ x 8 CMA EA30, 7½ x 10 CMA EA-30, 7¼ x 8 CMA E-42, 8½ x 10 CMA		DP-60, 9½ x 10 CMA DP-115/230, 13½ x 16 DP-70/80/160, 11 x 14 CMA	

Waukesha®, VHP®, and VGF® are registered trademarks of GE®, Caterpillar®, is a registered trademark of Caterpillar, Inc., Fairbanks Morse® is a registered trademark of Coltec Industries, Inc., and Ajax® is a registered trademark of Cameron International Corporation.